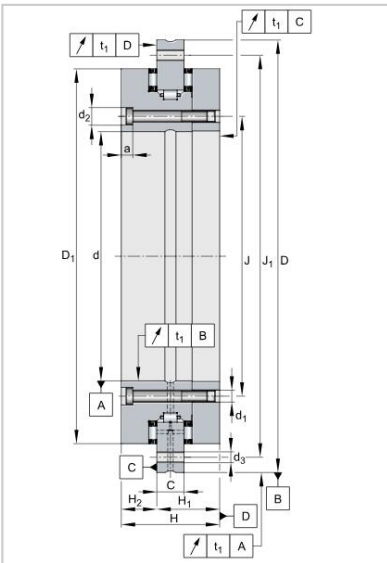
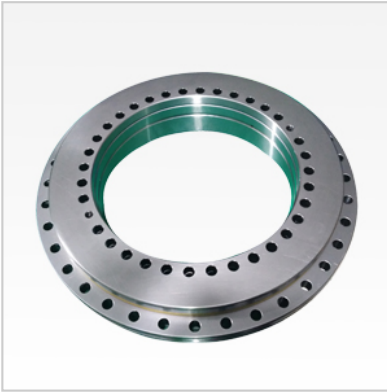


YRT Rotary Table Bearing

YRTC Rotary Table Bearing-YRTC850



Designation	YRTC850
Dimensions [mm]	
d	850
D	1095
H	124
H1	80.5
H2	43.5
C	37
D1	1018
J	890
J1	1055
Inner ring	
d1	18
d2	26
a	17
Qty	58
Outer ring	
d3	18
Qty	54
Threaded extraction hole	
G	M16
Qty	6
Screw tightening torque	284