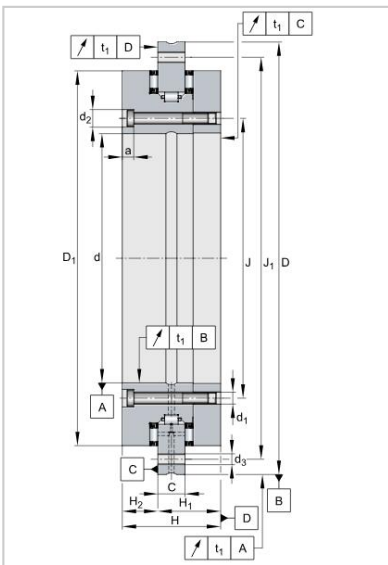
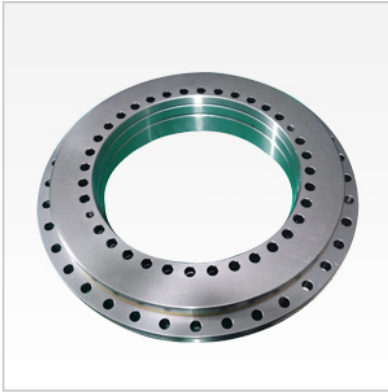


YRT Rotary Table Bearing

YRTC Rotary Table Bearing-YRTC200



Designation	YRTC200
Dimensions [mm]	
d	200
D	300
H	45
H1	30
H2	15
C	15
D1	274.4
J	215
J1	285
Inner ring	
d1	7
d2	11
a	6
Qty	46
Outer ring	
d3	7
Qty	45
Threaded extraction hole	
G	M8
Qty	3
Screw tightening torque	14