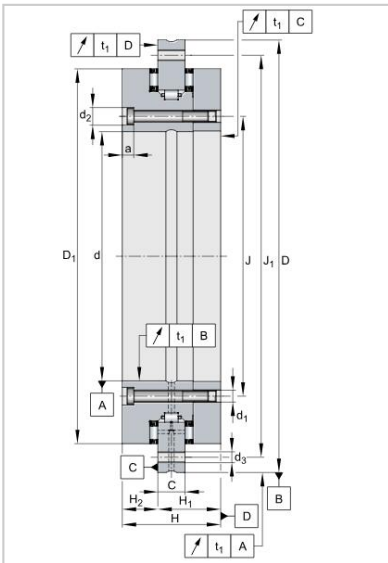
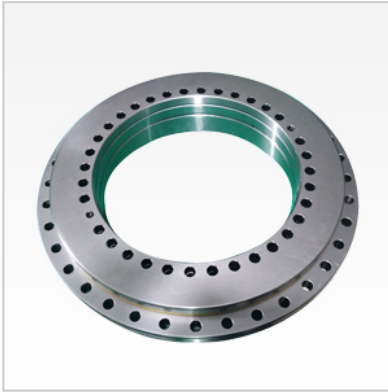


YRT Rotary Table Bearing

YRTC Rotary Table Bearing-YRTC180



Designation	YRTC180
Dimensions [mm]	
d	180
D	280
H	43
H1	29
H2	14
C	15
D1	245.1
J	194
J1	260
Inner ring	
d1	7
d2	11
a	6
Qty	46
Outer ring	
d3	7
Qty	45
Threaded extraction hole	
G	M8
Qty	3
Screw tightening torque	14