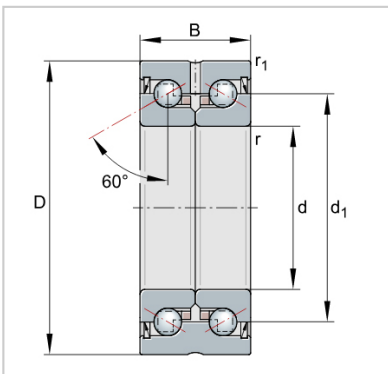


ZKLF ZKLN Double Direction Axial Angular Contact Ball Bearings

ZKLN Axial angular contact ball bearings-**ZKLN80130-2Z**



Designation	ZKLN80130-2Z
Mass m = kg	2.7
Dimensions	
d	80
D -0,010	130
B -0,25	45
d1	105
r min.	0.6
r1 min.	0.6
Mounting dimensions	
Da max.	120
da min.	102
Basic load ratings axial	
dyn. Ca N	100000
stat. C0a N	265000
Fatigue limit load Cu N	15400
Lim- iting speed nG	3600
grease min-1	
Thermally safe	2700
operating speed nP	
min-1	
Bearing frictional torque	1.4
MR Nm	
Rigidity axial caL N/μm	1600
Tilting rigidity ckL	3000
Nm/mrad	
Mass moment of	27.6
inertia1) Mm kg · cm ²	
Axial runout1) μm	3
Recommended INA precision locknut2)	
For radial locking	ZMA80/120
Tightening torque4) MA AM80	
Nm	
Tightening torque4) MA 160	
Nm	
Required locknut	20604
force3) axial N	