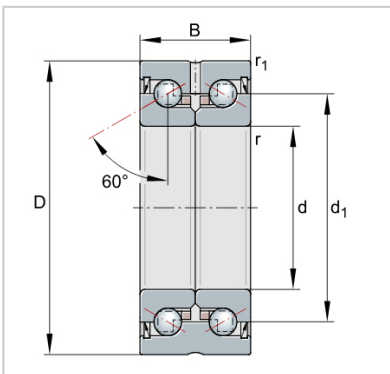


ZKLF ZKLN Double Direction Axial Angular Contact Ball Bearings

ZKLN Axial angular contact ball bearings-**ZKLN3572-2Z**



| | |
|--|--------------------|
| Designation | ZKLN3572-2Z |
| Mass m = kg | 0.51 |
| Dimensions | |
| d | 35 |
| D -0,010 | 72 |
| B -0,25 | 34 |
| d1 | 52 |
| r min. | 0.3 |
| r1 min. | 0.6 |
| Mounting dimensions | |
| Da max. | 62 |
| da min. | 45 |
| Basic load ratings axial | |
| dyn. Ca N | 45000 |
| stat. C0a N | 89000 |
| Fatigue limit load Cu N | 5200 |
| Lim- iting speed nG | 5800 |
| grease min-1 | |
| Thermally safe | 3800 |
| operating speed nP | |
| min-1 | |
| Bearing frictional torque | 0.3 |
| MR Nm | |
| Rigidity axial caL N/μm | 900 |
| Tilting rigidity ckL | 400 |
| Nm/mrad | |
| Mass moment of inertia1) Mm kg · cm ² | 1.51 |
| Axial runout1) μm | 2.5 |
| Recommended INA precision locknut2) | |
| For radial locking | ZM35 |
| Tightening torque4) MA AM35/58 | |
| Nm | |
| Tightening torque4) MA 40 | |
| Nm | |
| Required locknut force3) axial N | 10770 |