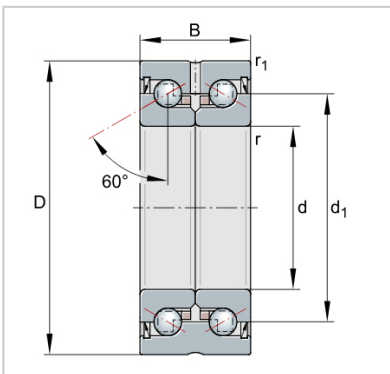


ZKLF ZKLN Double Direction Axial Angular Contact Ball Bearings

ZKLN Axial angular contact ball bearings-**ZKLN2557-2RS-PE**



|  |                        |
|--|------------------------|
| Designation                                      | <b>ZKLN2557-2RS-PE</b> |
| Mass m = kg                                      | 0.34                   |
| Dimensions                                       |                        |
| d  | <b>25</b>              |
| D -0,010   | <b>57</b>              |
| B -0,25  | 28                     |
| d1   | 40.5                   |
| r min.   | 0.3                    |
| r1 min.  | 0.6                    |
| Mounting dimensions                              |                        |
| Da max.  | 48                     |
| da min.  | 32                     |
| Basic load ratings axial                         |                        |
| dyn. Ca N  | 27500                  |
| stat. C0a N                                      | 55000                  |
| Fatigue limit load Cu N                          | 2450                   |
| Lim- iting speed nG                              | 5700                   |
| grease min-1                                     |                        |
| Thermally safe                                   | 2600                   |
| operating speed nP                               |                        |
| min-1  |                        |
| Bearing frictional torque                        | 0.4                    |
| MR Nm  |                        |
| Rigidity axial caL N/μm                          | 750                    |
| Tilting rigidity ckL                             | 200                    |
| Nm/mrad  |                        |
| Mass moment of inertia1) Mm kg · cm <sup>2</sup> | 0.486                  |
| Axial runout1) μm                                | <b>5</b>               |
| Recommended INA precision locknut2)              |                        |
| For radial locking                               | ZM25                   |
| Tightening torque4) MA                           | AM25                   |
| Nm   |                        |
| Tightening torque4) MA                           | <b>25</b>              |
| Nm   |                        |
| Required locknut force3) axial N                 | 9123                   |