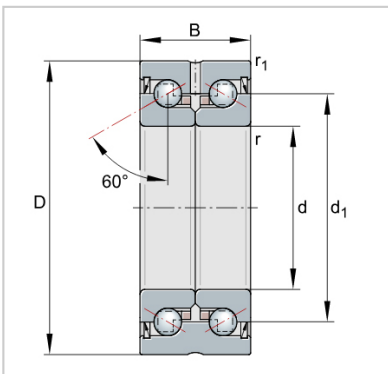


ZKLF ZKLN Double Direction Axial Angular Contact Ball Bearings

ZKLN Axial angular contact ball bearings-**ZKLN0832-2RS**



Designation	<b>ZKLN0832-2RS</b>
Mass m = kg	0.09
Dimensions	
d	<b>8</b>
D -0,010	<b>32</b>
B -0,25	20
d1	19
r min.	0.3
r1 min.	0.6
Mounting dimensions	
Da max.	26
da min.	11
Basic load ratings axial	
dyn. Ca N	13800
stat. C0a N	16300
Fatigue limit load Cu N	960
Lim- iting speed nG	12100
grease min-1	
Thermally safe	5100
operating speed nP	
min-1	
Bearing frictional torque	0.08
MR Nm	
Rigidity axial caL N/μm	250
Tilting rigidity ckL	20
Nm/mrad	
Mass moment of inertia1) Mm kg · cm <sup>2</sup>	0.02
Axial runout1) μm	<b>2</b>
Recommended INA precision locknut2)	
For radial locking	ZM08
Tightening torque4) MA - Nm	
Tightening torque4) MA 4 Nm	
Required locknut force3) axial N	3468