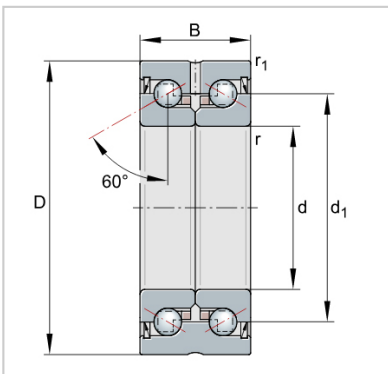


ZKLF ZKLN Double Direction Axial Angular Contact Ball Bearings

ZKLN Axial angular contact ball bearings-**ZKLN0624-2Z**



Designation	<b>ZKLN0624-2Z</b>
Mass m = kg	0.03
Dimensions	
d	<b>6</b>
D -0,010	<b>24</b>
B -0,25	15
d1	14
r min.	0.3
r1 min.	0.6
Mounting dimensions	
Da max.	19
da min.	9
Basic load ratings axial	
dyn. Ca N	7600
stat. C0a N	8500
Fatigue limit load Cu N	500
Lim- iting speed nG	19900
grease min-1	
Thermally safe	12000
operating speed nP	
min-1	
Bearing frictional torque	0.02
MR Nm	
Rigidity axial caL N/μm	200
Tilting rigidity ckL	8
Nm/mrad	
Mass moment of inertia1) Mm kg · cm <sup>2</sup>	0.0044
Axial runout1) μm	<b>2</b>
Recommended INA precision locknut2)	
For radial locking	ZM06
Tightening torque4) MA - Nm	
Tightening torque4) MA	<b>2</b>
Nm	
Required locknut force3) axial N	2404