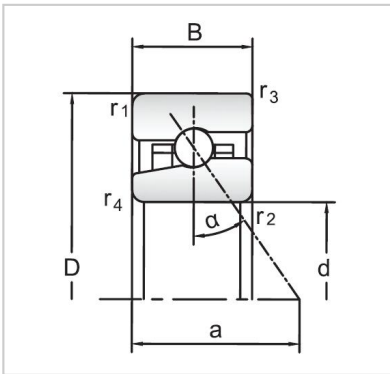


## Angular Contact Ball Bearings

### High speed Angular Contact Ball Bearings-H71924 C/HC



Bearing NO.	<b>H71924 C/HC</b>
Dimensions(mm)	
d	120
D	165
B	22
Basic Loading Ratings(KN)	
C	47.5
C0	40.5
Fatigue limit Pu (kN)	1.4
Calculation coefficient	8.5
f0	
Limiting speeds (r/min)	
Grease	12700
Oil	19000
d1 ~	134
D1 ~	151.01
r1,2 min	1.1
r3,4 min	0.6
a	31
da,db min (mm)	116
Da max (mm)	154
Db max (mm)	160.8
ra max (mm)	1.1
rb max (mm)	0.6
Weight (kg)	0.93