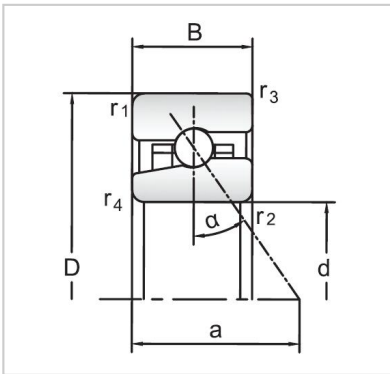


## Angular Contact Ball Bearings

### High speed Angular Contact Ball Bearings-H71919C/HC



Bearing NO.	<b>H71919C/HC</b>
Dimensions(mm)	
d	95
D	130
B	18
Basic Loading Ratings(KN)	
C	30.7
C0	25.5
Fatigue limit Pu (kN)	0.98
Calculation coefficient f0	8.6
Limiting speeds (r/min)	
Grease	16 000
Oil	25000
d1 ~	106
D1 ~	119.22
r1,2 min	1.1
r3,4 min	0.6
a	25
da,db min (mm)	101
Da max (mm)	124
Db max (mm)	125.8
ra max (mm)	1.1
rb max (mm)	0.6
Weight (kg)	0.48