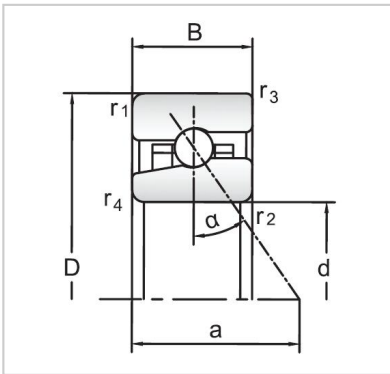


## Angular Contact Ball Bearings

### High speed Angular Contact Ball Bearings-H71919AC/HC



Bearing NO.	<b>H71919AC/HC</b>
Dimensions(mm)	
d	95
D	130
B	18
Basic Loading Ratings(KN)	
C	29.1
C0	24
Fatigue limit Pu (kN)	0.93
Calculation coefficient	-
f0	
Limiting speeds (r/min)	
Grease	15 000
Oil	23000
d1 ~	106
D1 ~	119.22
r1,2 min	1.1
r3,4 min	0.6
a	37
da,db min (mm)	101
Da max (mm)	124
Db max (mm)	125.8
ra max (mm)	1.1
rb max (mm)	0.6
Weight (kg)	0.48