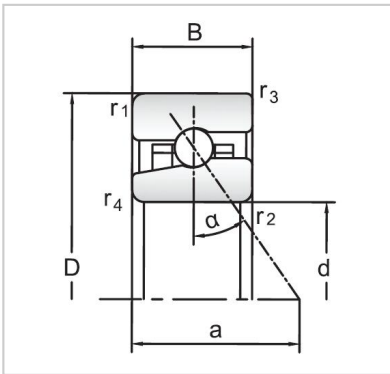


Angular Contact Ball Bearings

High speed Angular Contact Ball Bearings-H71908C/HC



Bearing NO.	H71908C/HC
Dimensions(mm)	
d	40
D	62
B	12
Basic Loading Ratings(KN)	
C	9.75
C0	6.1
Fatigue limit Pu (kN)	0.26
Calculation coefficient	8.3
f0	
Limiting speeds (r/min)	
Grease	38000
Oil	58000
d1 ~	46.5
D1 ~	54.2
r1,2 min	0.6
r3,4 min	0.3
a	13
da,db min (mm)	43.2
Da max (mm)	58.8
Db max (mm)	59.6
ra max (mm)	0.6
rb max (mm)	0.3
Weight (kg)	0.088