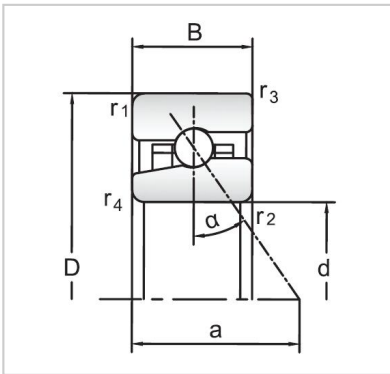


## Angular Contact Ball Bearings

### High speed Angular Contact Ball Bearings-H71907C



Bearing NO.	<b>H71907C</b>
Dimensions(mm)	
d	35
D	55
B	10
Basic Loading Ratings(KN)	
C	7.61
C0	4.75
Fatigue limit Pu (kN)	0.2
Calculation coefficient	8.3
f0	
Limiting speeds (r/min)	
Grease	36000
Oil	54000
d1 ~	41.7
D1 ~	48.3
r1,2 min	0.6
r3,4 min	0.3
a	11
da,db min (mm)	38.2
Da max (mm)	51.8
Db max (mm)	52.6
ra max (mm)	0.6
rb max (mm)	0.3
Weight (kg)	0.075