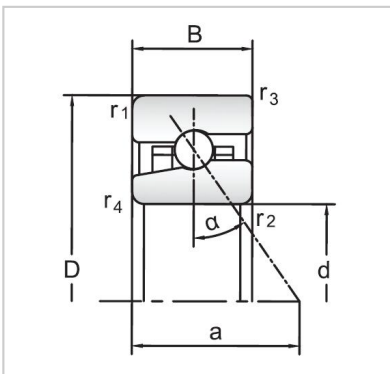


Angular Contact Ball Bearings

High speed Angular Contact Ball Bearings-H71906C/HC



Bearing NO.	H71906C/HC
Dimensions(mm)	
d	30
D	47
B	9
Basic Loading Ratings(KN)	
C	5.59
C0	3.25
Fatigue limit Pu (kN)	0.14
Calculation coefficient	8.3
f0	
Limiting speeds (r/min)	
Grease	49000
Oil	75000
d1 ~	35.8
D1 ~	41.4
r1,2 min	0.3
r3,4 min	0.15
a	10
da,db min (mm)	32
Da max (mm)	45
Db max (mm)	45.6
ra max (mm)	0.3
rb max (mm)	0.15
Weight (kg)	0.045