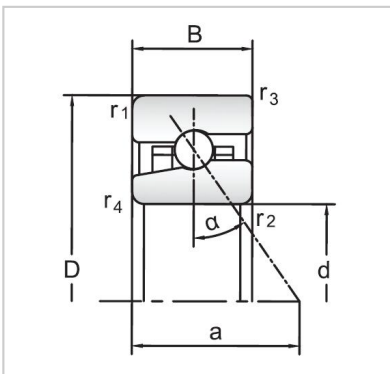


Angular Contact Ball Bearings

High speed Angular Contact Ball Bearings-H7022C/HC



Bearing NO.	H7022C/HC
Dimensions(mm)	
d	110
D	170
B	28
Basic Loading Ratings(KN)	
C	47.5
C0	45
Fatigue limit Pu (kN)	1.6
Calculation coefficient	9.6
f0	
Limiting speeds (r/min)	
Grease	12 700
Oil	20000
d1 ~	132.4
D1 ~	152.2
r1,2 min	2
r3,4 min	1
a	33
da,db min (mm)	118.8
Da max (mm)	161.2
Db max (mm)	164.4
ra max (mm)	2
rb max (mm)	1
Weight (kg)	1.95