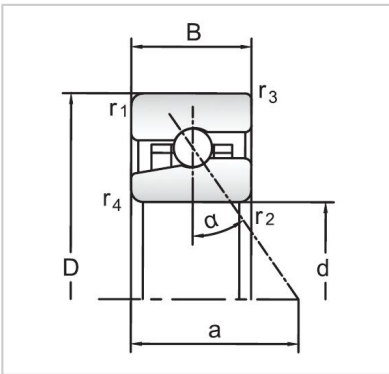


Angular Contact Ball Bearings

High speed Angular Contact Ball Bearings-H7010C/HC



Bearing NO.	H7010C/HC
Dimensions(mm)	
d	50
D	80
B	16
Basic Loading Ratings(KN)	
C	15.6
C0	10.6
Fatigue limit Pu (kN)	0.45
Calculation coefficient	8.2
f0	
Limiting speeds (r/min)	
Grease	30000
Oil	46000
d1 ~	60.3
D1 ~	72.9
r1,2 min	1
r3,4 min	0.6
a	17
da,db min (mm)	54.6
Da max (mm)	75.4
Db max (mm)	75.8
ra max (mm)	1
rb max (mm)	0.6
Weight (kg)	0.23