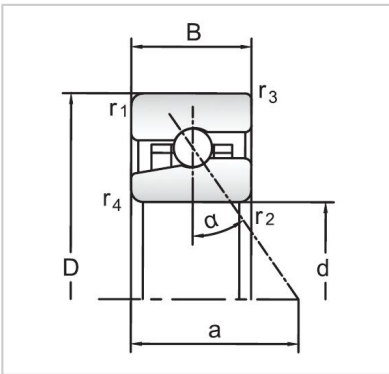


## Angular Contact Ball Bearings

### High speed Angular Contact Ball Bearings-



Bearing NO.	
Dimensions(mm)	
d	mm
D	mm
B	mm
Basic Loading Ratings(KN)	
C	
C0	
Fatigue limit Pu (kN)	
Calculation coefficient	
f0	
Limiting speeds (r/min)	
Grease	
Oil	
d1 ~	
D1 ~	
r1,2 min	N/μm
r3,4 min	
a	
da,db min (mm)	
Da max (mm)	
Db max (mm)	
ra max (mm)	
rb max (mm)	
Weight (kg)	