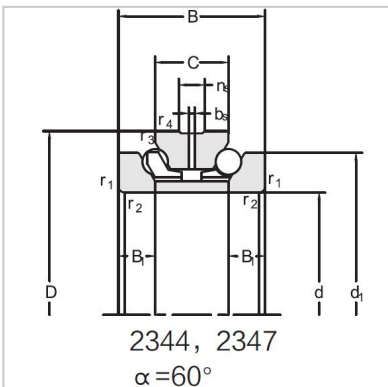


Angular Contact Ball Bearings

Double direction angular contact ball bearing-234428M



Bearing NO.	234428M
Dimension(mm)	
d	140
D	210
d1	187
T	84
C	42
B	21
rsmin	2.1
r1smin	0.6
Assembly Demension	
da	169
Da	198
ra	2.1
rb	0.6
Loading(KN)	
Ca	122
Coa	320
RPM(r/min)	
Lub.	2600
Oil	3600
Oil groove and oil hole(mm)	
n	12.2
k	6.3
Stiffness(N/ μ m)	
Ra	1034
Weight(Kg)	
\approx	8.78