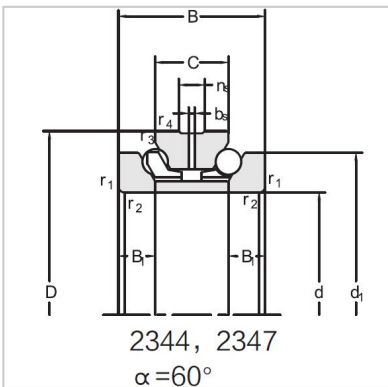


Angular Contact Ball Bearings

Double direction angular contact ball bearing-234426M



Bearing NO.	234426M
Dimension(mm)	
d	130
D	200
d1	177
T	84
C	42
B	21
rsmin	2
r1smin	0.6
Assembly Demension	
da	159
Da	188
ra	2
rb	0.6
Loading(KN)	
Ca	118
Coa	300
RPM(r/min)	
Lub.	2800
Oil	3800
Oil groove and oil hole(mm)	
n	12.2
k	6.3
Stiffness(N/ μ m)	
Ra	978
Weight(Kg)	
\approx	8.2