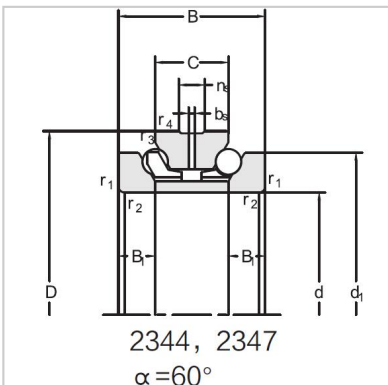


## Angular Contact Ball Bearings

### Double direction angular contact ball bearing-234422M



Bearing NO.	<b>234422M</b>
Dimension(mm)	
d	110
D	170
d1	150
T	72
C	36
B	18
rsmin	<b>2</b>
r1smin	0.6
Assembly Demension	
da	134.5
Da	160
ra	<b>2</b>
rb	0.6
Loading(KN)	
Ca	90
Coa	224
RPM(r/min)	
Lub.	3400
Oil	4500
Oil groove and oil hole(mm)	
n	9.5
k	4.8
Stiffness(N/ $\mu$ m)	
Ra	853
Weight(Kg)	
$\approx$	5.19