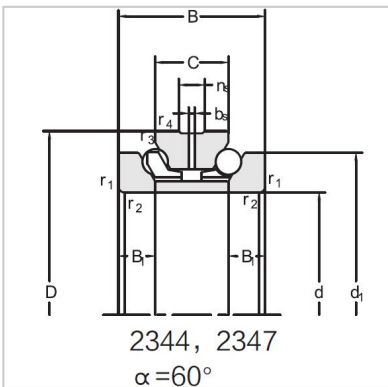


Angular Contact Ball Bearings

Double direction angular contact ball bearing-234415M



Bearing NO.	234415M
Dimension(mm)	
d	75
D	115
d1	102
T	48
C	24
B	12
rsmin	1.1
r1smin	0.3
Assembly Demension	
da	91.5
Da	108.5
ra	1
rb	0.3
Loading(KN)	
Ca	44
Coa	100
RPM(r/min)	
Lub.	5000
Oil	6700
Oil groove and oil hole(mm)	
n	6.5
k	3.2
Stiffness(N/μm)	
Ra	589
Weight(Kg)	
≈	1.57