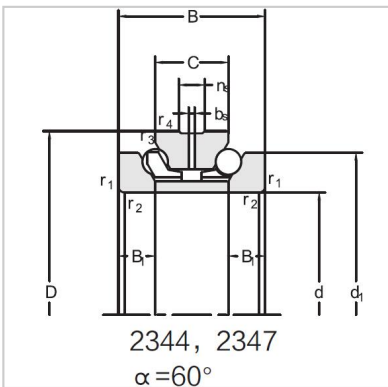


Angular Contact Ball Bearings

Double direction angular contact ball bearing-234410M



| | |
|-----------------------------|----------------|
| Bearing NO. | 234410M |
| Dimension(mm) | |
| d | 50 |
| D | 80 |
| d1 | 70 |
| T | 38 |
| C | 19 |
| B | 9.5 |
| rsmin | 1 |
| r1smin | 0.2 |
| Assembly Demension | |
| da | 62.5 |
| Da | 75 |
| ra | 1 |
| rb | 0.15 |
| Loading(KN) | |
| Ca | 24 |
| Coa | 49 |
| RPM(r/min) | |
| Lub. | 7000 |
| Oil | 9500 |
| Oil groove and oil hole(mm) | |
| n | 4.8 |
| k | 3.2 |
| Stiffness(N/μm) | |
| Ra | 410 |
| Weight(Kg) | |
| ≈ | 0.62 |