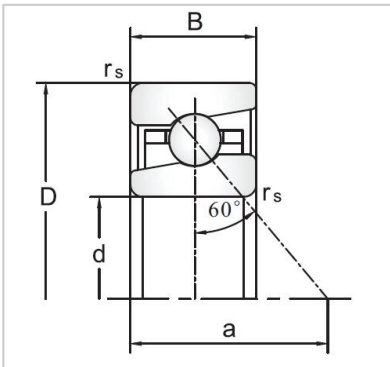
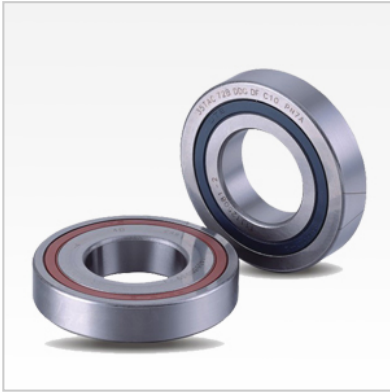


Angular Contact Ball Bearings

BS/TAC Series Ball Screw Support Angular Contact Ball Bearings-BS4575



Bearing NO.

BS **BS4575**

TAC 45TAC75C

Dimensions(mm)

d **45**

D **75**

B 15

r Min 1

r1 Max 0.6

Load Ca (N) 34.5

Rotation [min-1]

Lub. 3700

Oil. 4900

Stiffness (DB,DF) (N) H 3100

Rigidity (DB,DF) (N/μm) 1170

H

Torque (N·m) H 0.2

Weight (kg) 0.27