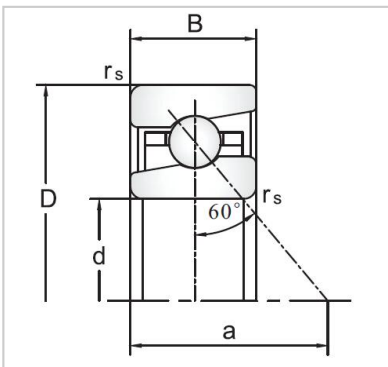
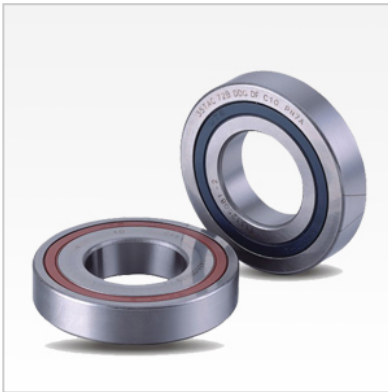


Angular Contact Ball Bearings

BS/TAC Series Ball Screw Support Angular Contact Ball Bearings-BS3572



Bearing NO.

BS **BS3572**

TAC 35TAC72C

Dimensions(mm)

d **35**

D **72**

B 15

r Min 1

r1 Max 0.6

Load Ca (N) 32.5

Rotation [min-1]

Lub. 4100

Oil. 5800

Stiffness (DB,DF) (N) H 2750

Rigidity (DB,DF) (N/μm) 1030

H

Torque (N·m) H 0.18

Weight (kg) 0.31