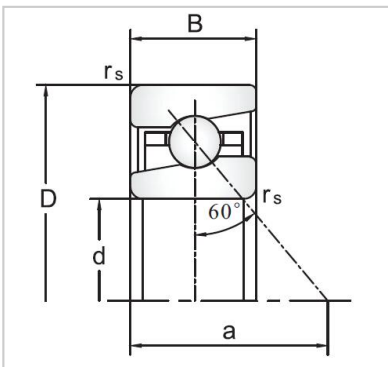
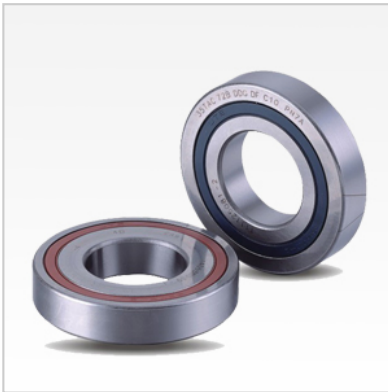


Angular Contact Ball Bearings

BS/TAC Series Ball Screw Support Angular Contact Ball Bearings-BS3062



Bearing NO.

BS **BS3062**

TAC 30TAC62C

Dimensions(mm)

d **30**

D **62**

B 15

r Min 1

r1 Max 0.6

Load Ca (N) 30.5

Rotation [min-1]

Lub. 4900

Oil. 6400

Stiffness (DB,DF) (N) H 2400

Rigidity (DB,DF) (N/μm) 890

H

Torque (N·m) H 0.16

Weight (kg) 0.224