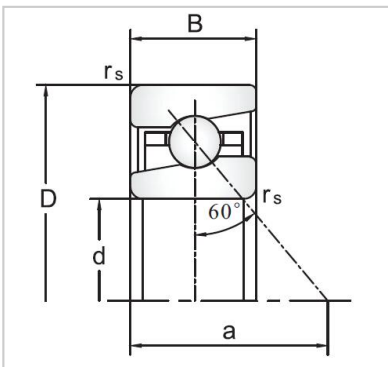
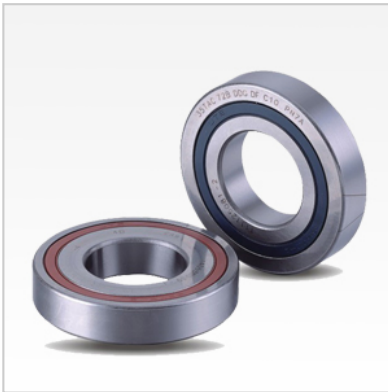


## Angular Contact Ball Bearings

### BS/TAC Series Ball Screw Support Angular Contact Ball Bearings-BS1747



Bearing NO.

BS **BS1747**  
TAC 17TAC47C

Dimensions(mm)

d **17**  
D **47**  
B 15  
r Min **1**  
r1 Max 0.6  
Load Ca (N) 23

Rotation [min-1]

Lub. 6900  
Oil. 9200

Stiffness (DB,DF) (N) H 1450

Rigidity (DB,DF) (N/μm) 630

H

Torque (N·m) H 0.09

Weight (kg) 0.14