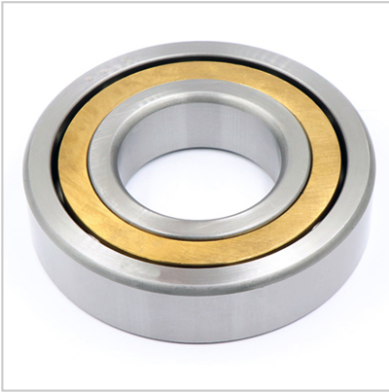


Angular Contact Ball Bearings

74 Series Angular Contact Ball Bearings-7410C



Designation	7410C
Principal Dimensions [mm]	
d	50
D	130
B	31
Basic Load Ratings (KN)	
Cr Dynamic	119.3
Cor Static	81
Limited Speed (rpm)	
Grease	4500
Oil	6000
Weight (kg) ≈	2.25

