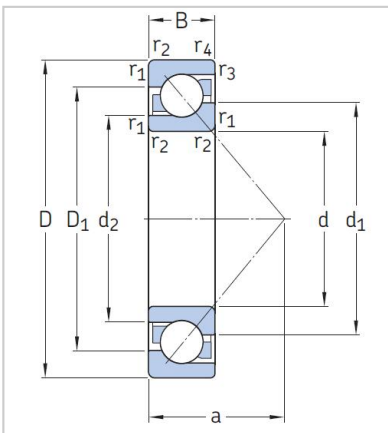
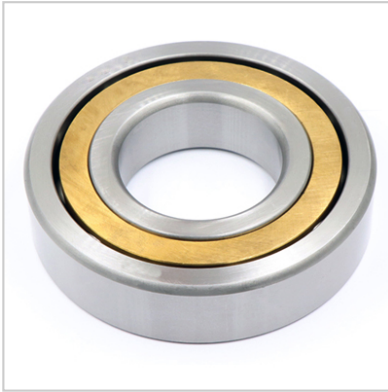


## Angular Contact Ball Bearings

### 74 Series Angular Contact Ball Bearings-7409C



Designation	<b>7409C</b>
Principal Dimensions [mm]	
d	45
D	120
B	29
Basic Load Ratings (KN)	
Cr Dynamic	93.1
Cor Static	60.8
Limited Speed (rpm)	
Grease	5000
Oil	6500
Weight (kg) ≈	1.8