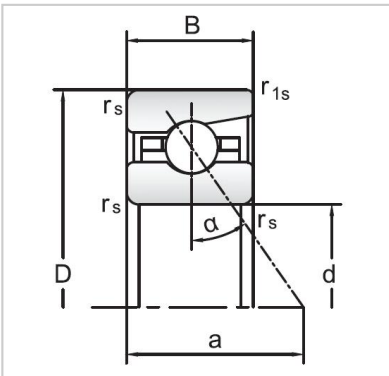


Angular Contact Ball Bearings

72 Series Angular Contact Ball Bearings-7240C



Bearing NO.	7240C
Dimensions(mm)	
d	200
D	360
B	58
ramin	4
r1min	1.5
Mounting dimensions	
da min	242
Da/Db max	318.5
ra max	4
rb max	1.5
Loading kN	
Cr	330.9
Cor	558.6
Limited Speed r/min	
Lub.	3200
Oil.	4800
Prelaoding N	
A(L)	1760
B(M)	5300
C(H)	10600
Axial rigidityRa N/μm	
A(L)	198
B(M)	288
C(H)	365
Weight Kg ≈	24.49