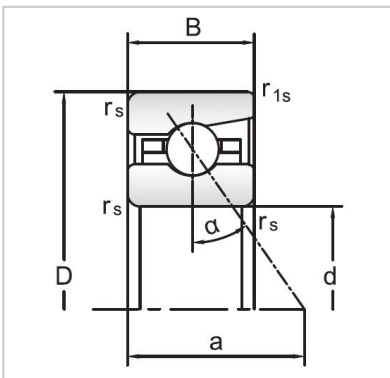


Angular Contact Ball Bearings

72 Series Angular Contact Ball Bearings-7238AC



Bearing NO.	7238AC
Dimensions(mm)	
d	190
D	340
B	55
r _{amin}	4
r _{lmin}	1.5
Mounting dimensions	
da min	227
Da/Db max	303.5
ra max	4
rb max	1.5
Loading kN	
Cr	305.1
Cor	500.1
Limited Speed r/min	
Lub.	3200
Oil.	4800
Prelaoding N	
A(L)	2700
B(M)	8100
C(H)	16200
Axial rigidityRa N/μm	
A(L)	515
B(M)	724
C(H)	910
Weight Kg ≈	20.29