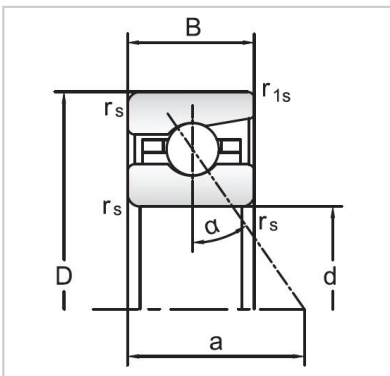


Angular Contact Ball Bearings

72 Series Angular Contact Ball Bearings-7236C



Bearing NO.	7236C
Dimensions(mm)	
d	180
D	320
B	52
ramin	4
r1min	1.5
Mounting dimensions	
da min	212
Da/Db max	288.5
ra max	4
rb max	1.5
Loading kN	
Cr	311.2
Cor	490.8
Limited Speed r/min	
Lub.	3800
Oil.	5600
Prelaoding N	
A(L)	1660
B(M)	4900
C(H)	9800
Axial rigidityRa N/μm	
A(L)	181
B(M)	264
C(H)	334
Weight Kg ≈	16.61