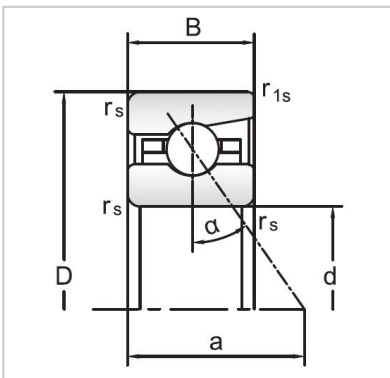


Angular Contact Ball Bearings

72 Series Angular Contact Ball Bearings-7232AC



| | |
|-----------------------|---------------|
| Bearing NO. | 7232AC |
| Dimensions(mm) | |
| d | 160 |
| D | 290 |
| B | 48 |
| ramin | 3 |
| r1min | 1.1 |
| Mounting dimensions | |
| da min | 193.5 |
| Da/Db max | 257 |
| ra max | 3 |
| rb max | 1.1 |
| Loading kN | |
| Cr | 236.1 |
| Cor | 348.6 |
| Limited Speed r/min | |
| Lub. | 3800 |
| Oil. | 5600 |
| Prelaoding N | |
| A(L) | 2100 |
| B(M) | 6300 |
| C(H) | 12600 |
| Axial rigidityRa N/μm | |
| A(L) | 446 |
| B(M) | 627 |
| C(H) | 788 |
| Weight Kg ≈ | 13.1 |