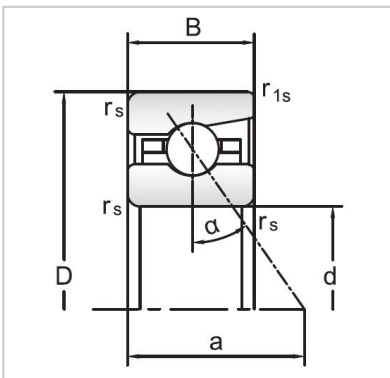


## Angular Contact Ball Bearings

### 72 Series Angular Contact Ball Bearings-7228C



Bearing NO.	<b>7228C</b>
Dimensions(mm)	
d	140
D	250
B	42
ramin	3
r1min	1.1
Mounting dimensions	
da min	165
Da/Db max	225.5
ra max	3
rb max	1.1
Loading kN	
Cr	223.6
Cor	306.6
Limited Speed r/min	
Lub.	5000
Oil.	7500
Prelaoding N	
A(L)	1200
B(M)	3600
C(H)	7200
Axial rigidityRa N/μm	
A(L)	152
B(M)	221
C(H)	279
Weight Kg ≈	8.17