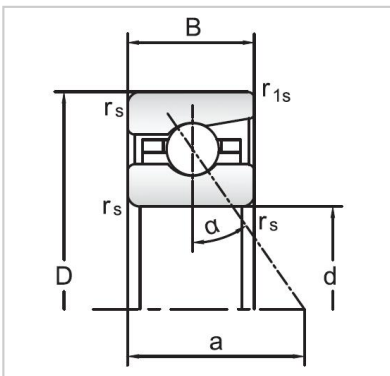


Angular Contact Ball Bearings

72 Series Angular Contact Ball Bearings-7226C



Bearing NO.	7226C
Dimensions(mm)	
d	130
D	230
B	40
ramin	3
r1min	1.1
Mounting dimensions	
da min	151.5
Da/Db max	209
ra max	3
rb max	1.1
Loading kN	
Cr	200.6
Cor	258.3
Limited Speed r/min	
Lub.	5600
Oil.	8500
Prelaoding N	
A(L)	1050
B(M)	3100
C(H)	6200
Axial rigidityRa N/μm	
A(L)	139
B(M)	202
C(H)	255
Weight Kg ≈	6.41