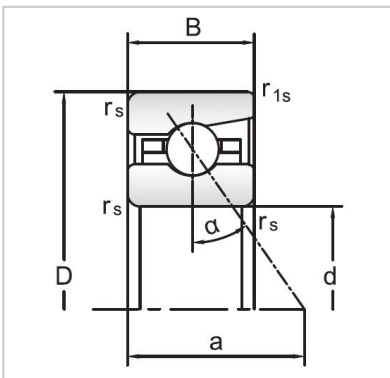


Angular Contact Ball Bearings

72 Series Angular Contact Ball Bearings-7224C



Bearing NO.	7224C
Dimensions(mm)	
d	120
D	215
B	40
ramin	2.1
r1min	1.1
Mounting dimensions	
da min	143
Da/Db max	192
ra max	2.1
rb max	1.1
Loading kN	
Cr	175.4
Cor	218.4
Limited Speed r/min	
Lub.	6000
Oil.	9000
Prelaoding N	
A(L)	950
B(M)	2850
C(H)	5700
Axial rigidityRa N/μm	
A(L)	133
B(M)	193
C(H)	245
Weight Kg ≈	6.01