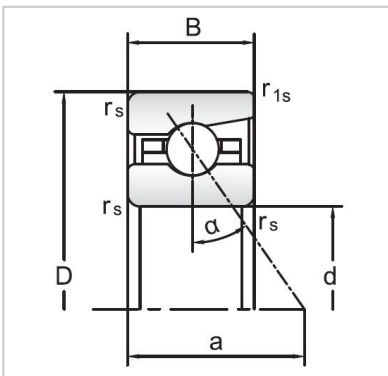


Angular Contact Ball Bearings

72 Series Angular Contact Ball Bearings-7224AC



Bearing NO.	7224AC
Dimensions(mm)	
d	120
D	215
B	40
ramin	2.1
r1min	1.1
Mounting dimensions	
da min	143
Da/Db max	192
ra max	2.1
rb max	1.1
Loading kN	
Cr	166.3
Cor	207.9
Limited Speed r/min	
Lub.	5300
Oil.	8000
Prelaoding N	
A(L)	1500
B(M)	4500
C(H)	9000
Axial rigidityRa N/μm	
A(L)	358
B(M)	502
C(H)	631
Weight Kg ≈	6.01