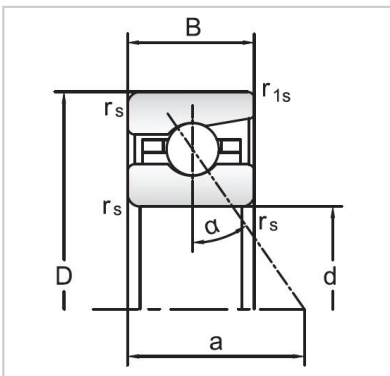


Angular Contact Ball Bearings

72 Series Angular Contact Ball Bearings-7222C



Bearing NO.	7222C
Dimensions(mm)	
d	110
D	200
B	38
ramin	2.1
r1min	1.1
Mounting dimensions	
da min	130
Da/Db max	181
ra max	2.1
rb max	1.1
Loading kN	
Cr	170.4
Cor	202.5
Limited Speed r/min	
Lub.	6700
Oil.	10000
Prelaoding N	
A(L)	920
B(M)	2760
C(H)	5520
Axial rigidityRa N/μm	
A(L)	127
B(M)	184
C(H)	233
Weight Kg ≈	4.95