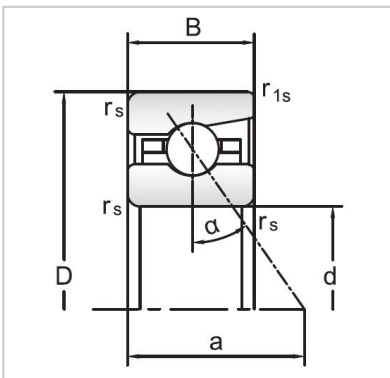


Angular Contact Ball Bearings

72 Series Angular Contact Ball Bearings-7222AC



Bearing NO.	7222AC
Dimensions(mm)	
d	110
D	200
B	38
ramin	2.1
r1min	1.1
Mounting dimensions	
da min	130
Da/Db max	181
ra max	2.1
rb max	1.1
Loading kN	
Cr	161.8
Cor	193
Limited Speed r/min	
Lub.	6000
Oil.	9000
Prelaoding N	
A(L)	1480
B(M)	4440
C(H)	8880
Axial rigidityRa N/μm	
A(L)	341
B(M)	478
C(H)	601
Weight Kg ≈	4.95