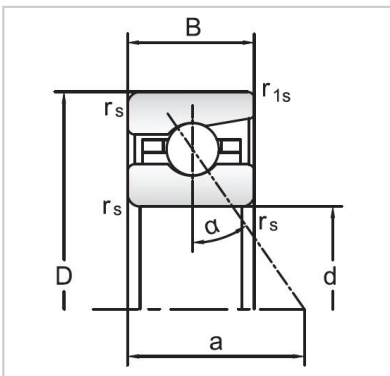


Angular Contact Ball Bearings

72 Series Angular Contact Ball Bearings-7221C



Bearing NO.	7221C
Dimensions(mm)	
d	105
D	190
B	36
ramin	2.1
r1min	1.1
Mounting dimensions	
da min	122
Da/Db max	173
ra max	2.1
rb max	1.1
Loading kN	
Cr	164.3
Cor	188.2
Limited Speed r/min	
Lub.	7000
Oil.	11000
Prelaoding N	
A(L)	890
B(M)	2670
C(H)	5340
Axial rigidityRa N/μm	
A(L)	121
B(M)	175
C(H)	221
Weight Kg ≈	4.17