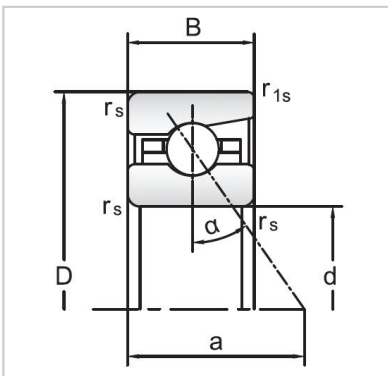


Angular Contact Ball Bearings

72 Series Angular Contact Ball Bearings-7220C



Bearing NO.	7220C
Dimensions(mm)	
d	100
D	180
B	34
ramin	2.1
r1min	1.1
Mounting dimensions	
da min	116
Da/Db max	164
ra max	2.1
rb max	1.1
Loading kN	
Cr	146.2
Cor	165.9
Limited Speed r/min	
Lub.	7000
Oil.	11000
Prelaoding N	
A(L)	770
B(M)	2310
C(H)	4620
Axial rigidityRa N/μm	
A(L)	114
B(M)	165
C(H)	208
Weight Kg ≈	3.51