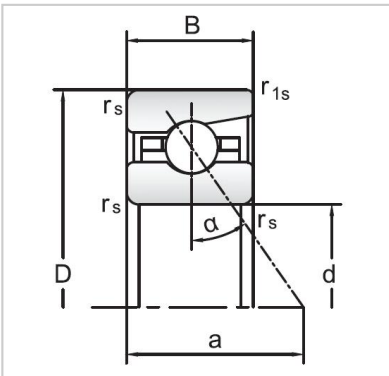


## Angular Contact Ball Bearings

### 72 Series Angular Contact Ball Bearings-7218C



Bearing NO.	<b>7218C</b>
Dimensions(mm)	
d	90
D	160
B	30
r <sub>amin</sub>	<b>2</b>
r <sub>1min</sub>	<b>1</b>
Mounting dimensions	
da min	103
Da/Db max	147
ra max	<b>2</b>
rb max	<b>1</b>
Loading kN	
Cr	121.9
Cor	131.3
Limited Speed r/min	
Lub.	8000
Oil.	13000
Prelaoding N	
A(L)	655
B(M)	1960
C(H)	3920
Axial rigidityRa N/μm	
A(L)	110
B(M)	160
C(H)	202
Weight Kg ≈	2.44