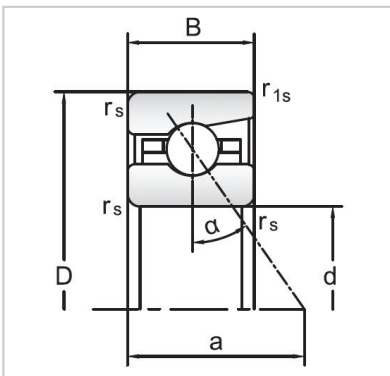


Angular Contact Ball Bearings

72 Series Angular Contact Ball Bearings-7215C



Bearing NO.	7215C
Dimensions(mm)	
d	75
D	130
B	25
r _{amin}	1.5
r _{lmin}	0.6
Mounting dimensions	
da min	86.5
Da/Db max	118.5
ra max	1.5
rb max	0.6
Loading kN	
Cr	72.7
Cor	80.2
Limited Speed r/min	
Lub.	9500
Oil.	16000
Prelaoding N	
A(L)	385
B(M)	1150
C(H)	2300
Axial rigidityRa N/μm	
A(L)	82
B(M)	119
C(H)	151
Weight Kg ≈	1.29