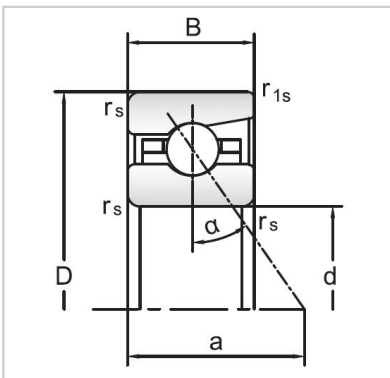


Angular Contact Ball Bearings

72 Series Angular Contact Ball Bearings-7212C



Bearing NO.	7212C
Dimensions(mm)	
d	60
D	110
B	22
r _{amin}	1.5
r _{lmin}	0.6
Mounting dimensions	
da min	71.5
Da/Db max	100.5
ra max	1.5
rb max	0.6
Loading kN	
Cr	55.8
Cor	56.2
Limited Speed r/min	
Lub.	12000
Oil.	19000
Prelaoding N	
A(L)	305
B(M)	910
C(H)	1820
Axial rigidityRa N/μm	
A(L)	67
B(M)	97
C(H)	123
Weight Kg ≈	0.86