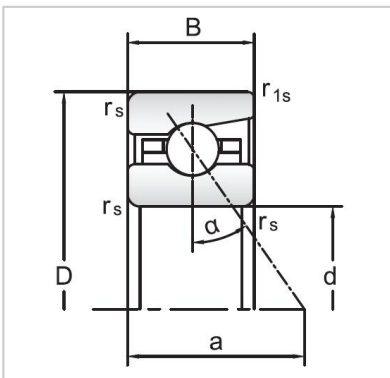


Angular Contact Ball Bearings

72 Series Angular Contact Ball Bearings-7211C



Bearing NO.	7211C
Dimensions(mm)	
d	55
D	100
B	21
r _{amin}	1.5
r _{1min}	0.6
Mounting dimensions	
da min	63
Da/Db max	92
ra max	1.5
rb max	0.6
Loading kN	
Cr	53.6
Cor	51.1
Limited Speed r/min	
Lub.	14000
Oil.	22000
Prelaoding N	
A(L)	290
B(M)	870
C(H)	1740
Axial rigidityRa N/μm	
A(L)	63
B(M)	91
C(H)	116
Weight Kg ≈	0.65