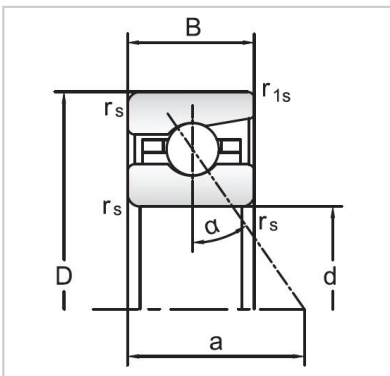


## Angular Contact Ball Bearings

### 72 Series Angular Contact Ball Bearings-7210C



Bearing NO.	<b>7210C</b>
Dimensions(mm)	
d	50
D	90
B	20
r <sub>amin</sub>	1.1
r <sub>lmin</sub>	0.6
Mounting dimensions	
da min	57.5
Da/Db max	83
ra max	1.1
rb max	0.6
Loading kN	
Cr	43.3
Cor	40.6
Limited Speed r/min	
Lub.	15000
Oil.	24000
Prelaoding N	
A(L)	225
B(M)	670
C(H)	1340
Axial rigidityRa N/μm	
A(L)	57
B(M)	82
C(H)	104
Weight Kg ≈	0.49