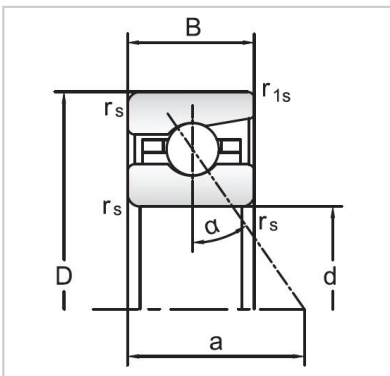


## Angular Contact Ball Bearings

### 72 Series Angular Contact Ball Bearings-7208C



Bearing NO.	<b>7208C</b>
Dimensions(mm)	
d	40
D	80
B	18
ramin	1.1
r1min	0.6
Mounting dimensions	
da min	49
Da/Db max	71
ra max	1.1
rb max	0.6
Loading kN	
Cr	34.1
Cor	30.9
Limited Speed r/min	
Lub.	17000
Oil.	28000
Prelaoding N	
A(L)	180
B(M)	540
C(H)	1080
Axial rigidityRa N/μm	
A(L)	50
B(M)	<b>72</b>
C(H)	92
Weight Kg ≈	0.4