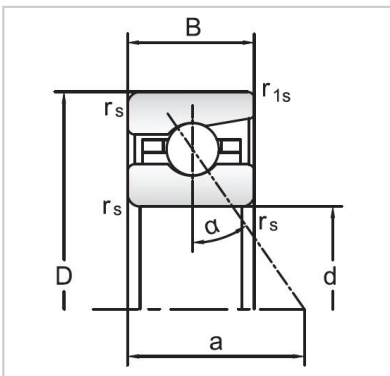


Angular Contact Ball Bearings

72 Series Angular Contact Ball Bearings-7206C



Bearing NO.	7206C
Dimensions(mm)	
d	30
D	62
B	16
ramin	1
r1min	0.3
Mounting dimensions	
da min	36.5
Da/Db max	55.5
ra max	1
rb max	0.3
Loading kN	
Cr	23.4
Cor	18.8
Limited Speed r/min	
Lub.	24000
Oil.	38000
Prelaoding N	
A(L)	120
B(M)	360
C(H)	720
Axial rigidityRa N/μm	
A(L)	38
B(M)	55
C(H)	69
Weight Kg ≈	0.21