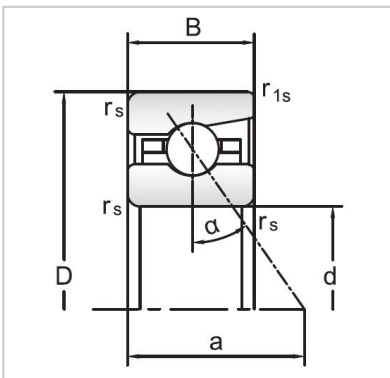


## Angular Contact Ball Bearings

### 72 Series Angular Contact Ball Bearings-7206AC



Bearing NO.	<b>7206AC</b>
Dimensions(mm)	
d	30
D	62
B	16
r <sub>amin</sub>	1
r <sub>lmin</sub>	0.3
Mounting dimensions	
da min	36.5
Da/Db max	55.5
ra max	1
rb max	0.3
Loading kN	
Cr	22.3
Cor	18
Limited Speed r/min	
Lub.	20000
Oil.	34000
Prelaoding N	
A(L)	200
B(M)	600
C(H)	1200
Axial rigidityRa N/μm	
A(L)	101
B(M)	141
C(H)	178
Weight Kg ≈	0.21