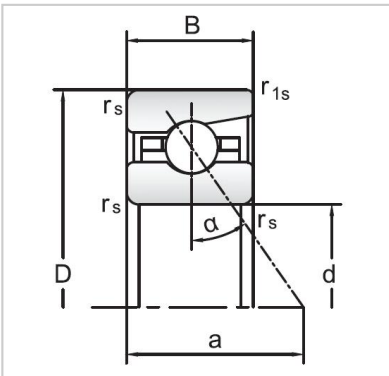


Angular Contact Ball Bearings

72 Series Angular Contact Ball Bearings-7205C



Bearing NO.	7205C
Dimensions(mm)	
d	25
D	52
B	15
r _{amin}	1
r _{lmin}	0.3
Mounting dimensions	
da min	30.5
Da/Db max	46.5
ra max	1
rb max	0.3
Loading kN	
Cr	16.8
Cor	13.1
Limited Speed r/min	
Lub.	30000
Oil.	45000
Prelaoding N	
A(L)	90
B(M)	270
C(H)	540
Axial rigidityRa N/μm	
A(L)	32
B(M)	46
C(H)	58
Weight Kg ≈	0.14