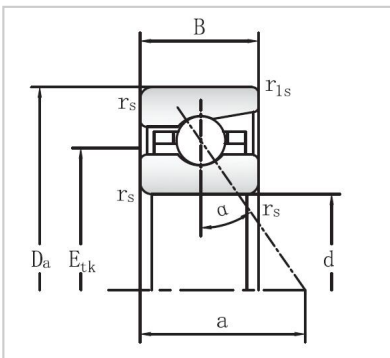


## Angular Contact Ball Bearings

### 719 Series Angular Contact Ball Bearings-71915



Bearing NO.	<b>71915</b>
Dimensions	
d mm	75
D mm	105
B mm	16
r <sub>s</sub> min	<b>1</b>
r <sub>1s</sub> min	<b>1</b>
Assemnly Dimensions	
da h12	81
Da H12	99.5
ra max	0.6
rb max	0.6
E <sub>tk</sub>	87.2
Loading	
C <sub>dyn</sub> kN	34
C <sub>0stat</sub> kN	34.5
RPM	
Grease min-1	12000
Oil minimal	19000
FV	
L (N)	174
M (N)	596
H	1246
KaE	
L	537
M	1991
H	4460
Sa	
L (N/μm)	68.5
M	118.8
H	172.7
Weight kg	0.35